



National CAT Forum

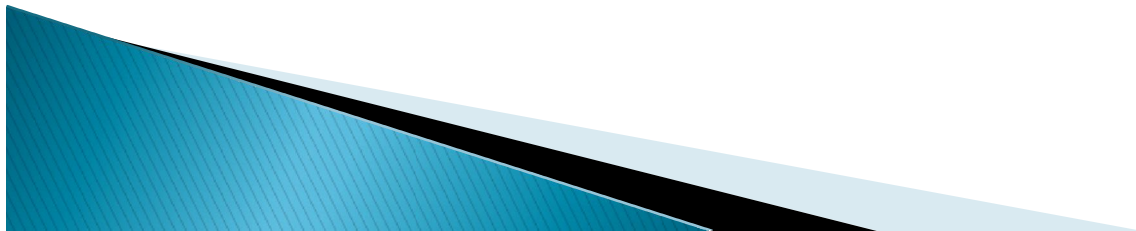
Francesca Saccaro

Associate Director,
TAFE NSW – Western Sydney Institute



About WSI

<http://youtu.be/UKHLVNZmEDo>



Institute Overview



Western Sydney Institute

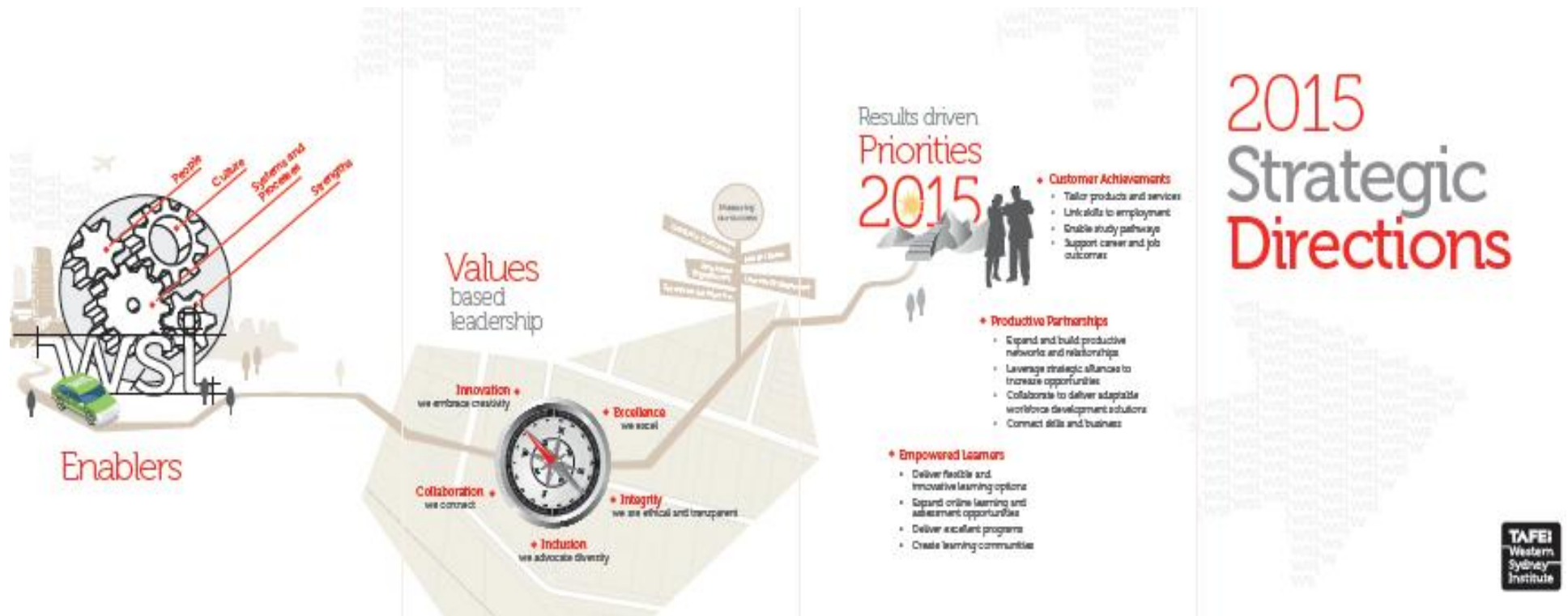
Greater Western
Sydney Demographics



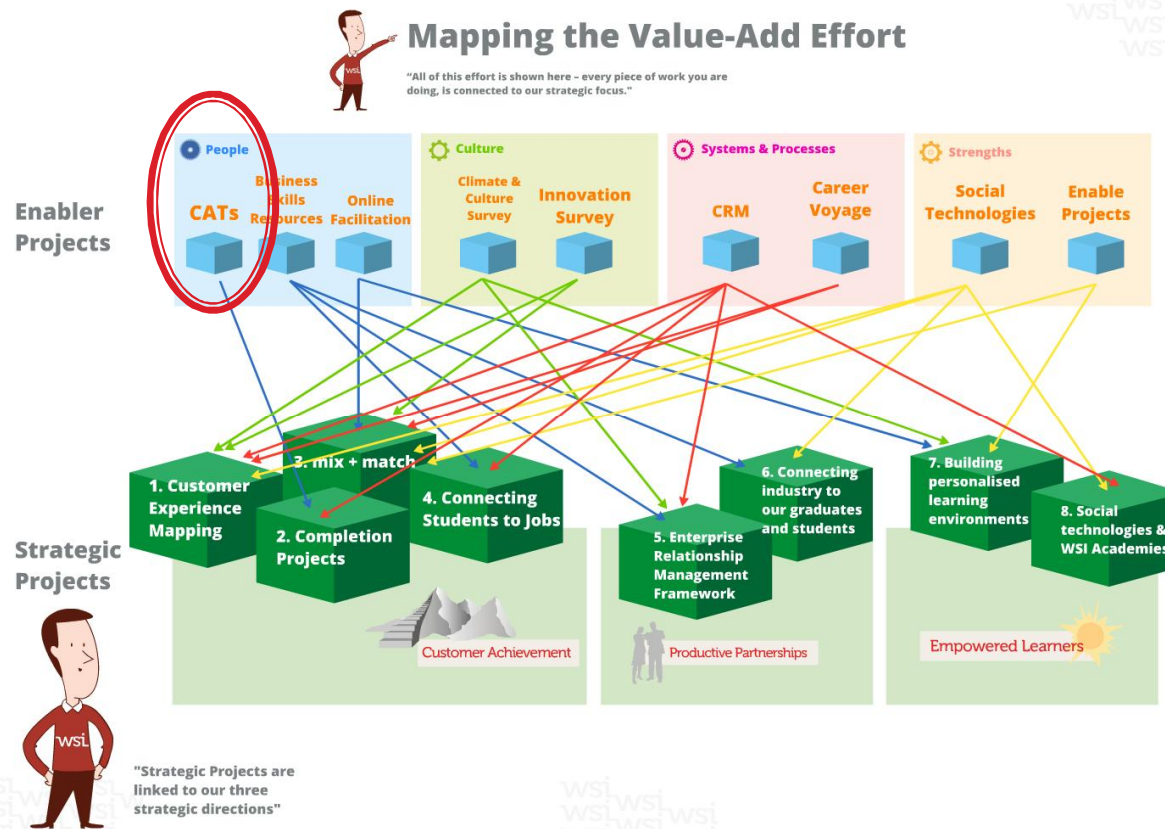
Why Capability Analysis?

- ▶ Western Sydney Institute (WSI) prioritises the skills and capabilities of its staff
- ▶ In light of major VET reform, WSI is ensuring its staff have the required capabilities to perform their employment roles effectively
- ▶ Staff capability is critical for the Institute to achieve its strategic priorities

WSI Strategic Priorities



Integrating CAT with Strategic Priorities



Factors to Success

- ▶ CAT surveys not conducted as a random event – strategically linked to the Institute's priorities.
- ▶ Targeted communication strategy to WSI staff
- ▶ Promoted in all communication with staff that there will be follow-up
- ▶ Feedback and results inform Institute planning process

Any Questions?

Thank you